

Burch

In Demand Plus Collection

Vertical Surface Fabrics

- High Inventory
- Made in the U.S.A.
- Recycled Content

In Demand Plus Collection / Vertical Surface Fabrics

	Alliance	Coalition	Collaborate	Collective	Unison
Content	42% Polyester 38% P.I. Recycled Polyester ¹ 20% P.C. Recycled Polyester ²	41% Polyester 38% P.I. Recycled Polyester ¹ 21% P.C. Recycled Polyester ²	42% Polyester 38% P.I. Recycled Polyester ¹ 20% P.C. Recycled Polyester ²	56% P. I. Recycled Polyester ¹ 44% P. C. Recycled Polyester ²	50% P. I. Recycled Polyester ¹ 27% P. C. Recycled Polyester ² 23% Polyester
Ends / Picks	145 / 48	145 / 47	145 / 49	145 / 45	145 / 47
Weight	10.4 oz. / lin yd.	10.7 oz. / lin yd.	7.8 oz. / lin yd.	10.6 oz. / lin yd.	10.8 oz. / lin yd.
Repeat	Not Applicable / Directional	Not Applicable / Directional	H 4.25" V 3.25" / Directional	Not Applicable / Directional	Not Applicable / Directional
Roll Size / Width	50 yds. / 66"	50 yds. / 66"	50 yds. / 66"	50 yds. / 66"	50 yds. / 66"
Cleaning Code	W-S	W-S	W-S	W-S	W-S
Flammability³	ASTM E-84 Cal. TB 117-E NFPA 260 / UFAC	ASTM E-84 Cal. TB 117-E NFPA 260 / UFAC	ASTM E-84 Cal. TB 117-E NFPA 260 / UFAC	ASTM E-84 Cal. TB 117-E NFPA 260 / UFAC	ASTM E-84 Cal. TB 117-E NFPA 260 / UFAC

Additional Info

All patterns in this collection **meet or exceed** ACT® Performance Guidelines.



*ACT® Registered Certification Marks

Dye lots may vary from samples shown. Final determination of the suitability of this product for an application rests with the user.

***Flammability:** This term and any corresponding data refer to the typical performance in the specific tests indicated and should not be construed to imply the behavior of this or any other material under actual fire conditions.

A Proposition 65 Warning may be applicable for this product. Please refer to burchfabrics.com for more information.

Please visit our website at BurchFabrics.com for complete specification information as well as cleaning guidelines.

Directional Fabric

All patterns in this collection are directional fabrics. Please use caution when cutting and applying.

UL Recognized Component

All patterns in this collection can be applied without need for further testing to any office panel system which has been authorized for use with fabrics included in UL's Fabric Recognition Program.

Earth Friendly

All patterns in this collection are part of the Earth Friendly Collection. Burch's Earth Friendly Collection provides fabric options for reducing a negative impact on the environment.

¹ P.I. Recycled Polyester = Post Industrial Material
² P.C. Recycled Polyester = Post Consumer Material

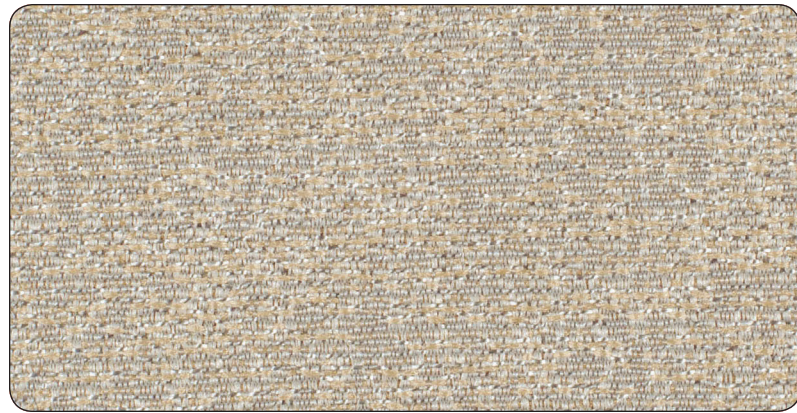
Alliance / Coalition / Collaborate / Collective / Unison

Burch

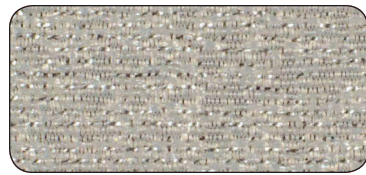
Toll Free **1.800.841.8111**

Visit us at BurchFabrics.com

Alliance



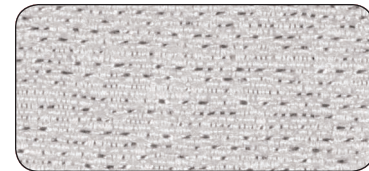
7216 Mica



7220 Sterling



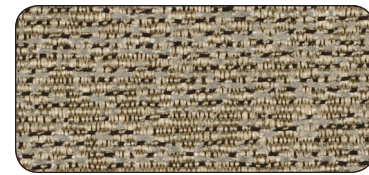
7219 Alloy



7221 Stardust

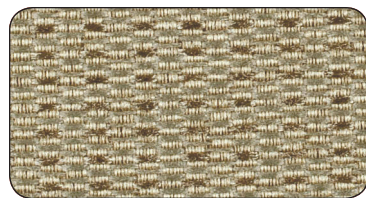


7218 Champagne



7217 Taupe

Collective



7930 Jute

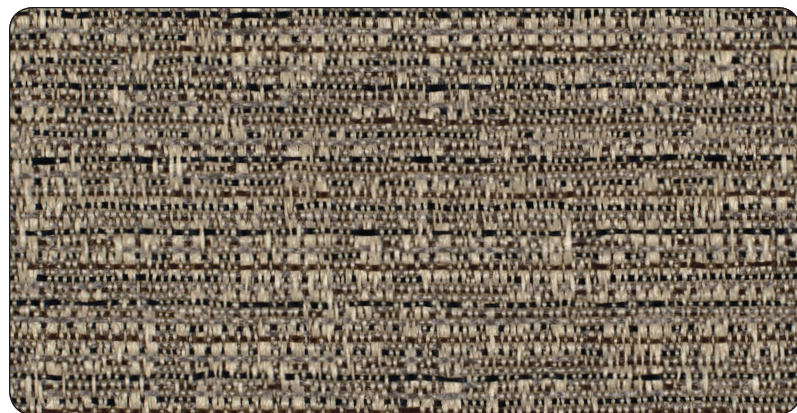


7929 Driftwood

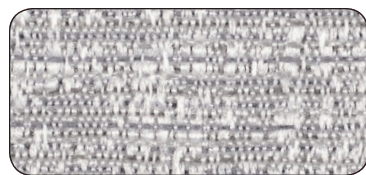


7931 Sand Dollar

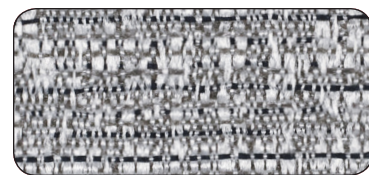
Unison



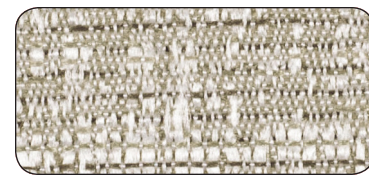
7313 Suede



7316 Halo



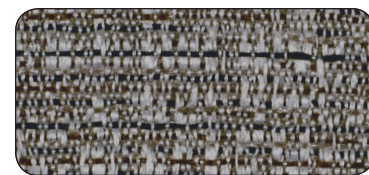
7315 Haze



7317 Ecru

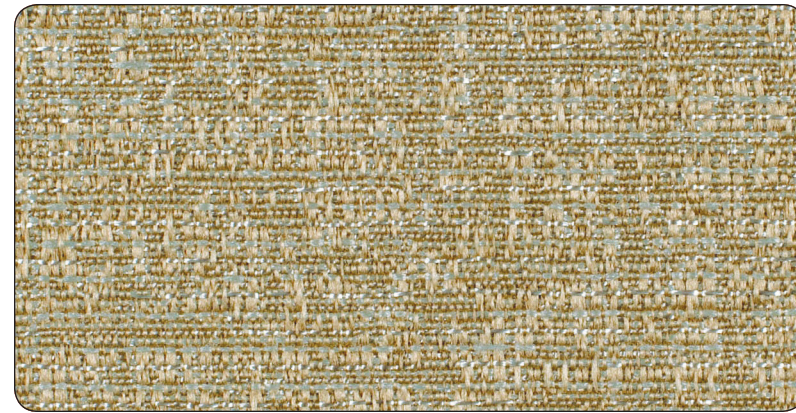


7318 Putty

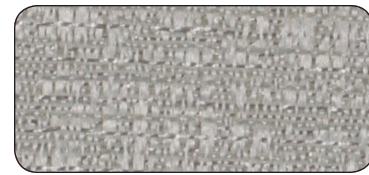


7314 Flint

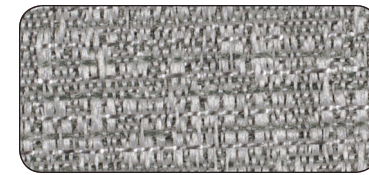
Coalition



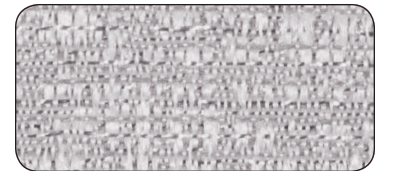
7132 Soft Bronze



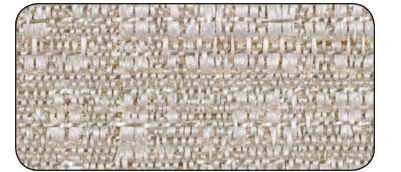
7129 Tinsel



7131 Heirloom



7128 Iced



7133 Shimmer

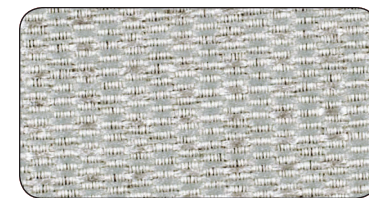


7130 Pewter

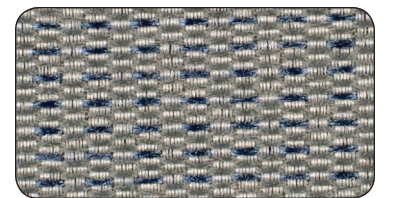
Collective



7926 Pearl



7927 Aluminum



7928 Storm

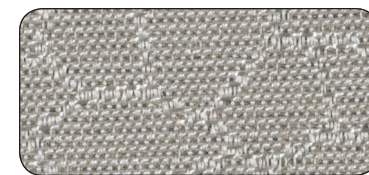
Collaborate



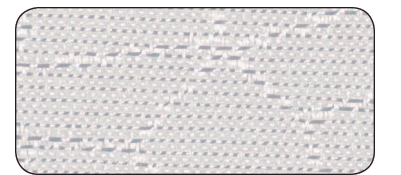
7059 Linen



7055 Moon Rock



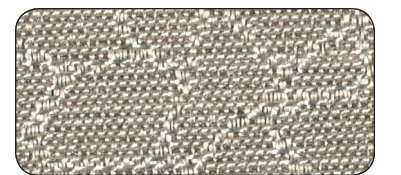
7054 Slate



7056 Oyster



7057 Latte



7058 Fawn