


# Burch

## In Demand Plus II Collection

Vertical Surface Fabrics

### In Demand Plus II Collection / Vertical Surface Fabrics

- High Inventory
- Made in the U.S.A.
- Recycled Content

	Axis	Cusp	Hinge	Tier
<b>Content</b>	56% P.I. Recycled Polyester <sup>1</sup> 44% P.C. Recycled Polyester <sup>2</sup>	58% P.I. Recycled Polyester <sup>1</sup> 32% P.C. Recycled Polyester <sup>2</sup> 10% Polyester	43% P.I. Recycled Polyester <sup>1</sup> 34% Polyester 23% P.C. Recycled Polyester <sup>2</sup>	57% Polyester 28% P.I. Recycled Polyester <sup>1</sup> 15% P.C. Recycled Polyester <sup>2</sup>
	 Earth Friendly	 Earth Friendly	 Earth Friendly	
<b>Ends / Picks</b>	145 / 34	145 / 36	145 / 34	145 / 31
<b>Weight</b>	10.0 oz. / lin yd.	10.9 oz. / lin yd.	11.5 oz. / lin yd.	13.9 oz. / lin yd.
<b>Repeat</b>	Not Applicable / Directional	Not Applicable / Directional	Not Applicable / Directional	Not Applicable / Directional
<b>Roll Size / Width</b>	50 yds. / 66"	55 yds. / 66"	50 yds. / 66"	50 yds. / 66"
<b>Cleaning Code</b>	W-S	W-S	W-S	W-S
<b>Flammability<sup>3</sup></b>	ASTM E-84 Cal. TB 117-2013 NFPA 260 / UFAC	ASTM E-84 Cal. TB 117-2013 NFPA 260 / UFAC	ASTM E-84 Cal. TB 117-2013 NFPA 260 / UFAC	ASTM E-84 Cal. TB 117-2013 NFPA 260 / UFAC

#### Additional Info

All patterns in this collection **meet or exceed** ACT® Performance Guidelines.



\*ACT® Registered Certification Marks

Dye lots may vary from samples shown. Final determination of the suitability of this product for an application rests with the user.

**\*Flammability:** This term and any corresponding data refer to the typical performance in the specific tests indicated and should not be construed to imply the behavior of this or any other material under actual fire conditions.

A Proposition 65 Warning may be applicable for this product. Please refer to [burchfabrics.com](http://burchfabrics.com) for more information.

Please visit our website at [BurchFabrics.com](http://BurchFabrics.com) for complete specification information as well as cleaning guidelines.

#### Directional Fabric

All patterns in this collection are directional fabrics. Please use caution when cutting and applying.

#### UL Recognized Component

All patterns in this collection can be applied without need for further testing to any office panel system which has been authorized for use with fabrics included in UL's Fabric Recognition Program.

#### Earth Friendly

**Axis, Cusp and Hinge** are part of the Earth Friendly Collection. Burch's Earth Friendly Collection provides fabric options for reducing a negative impact on the environment.

<sup>1</sup> P.I. Recycled Polyester = Post Industrial Material  
<sup>2</sup> P.C. Recycled Polyester = Post Consumer Material

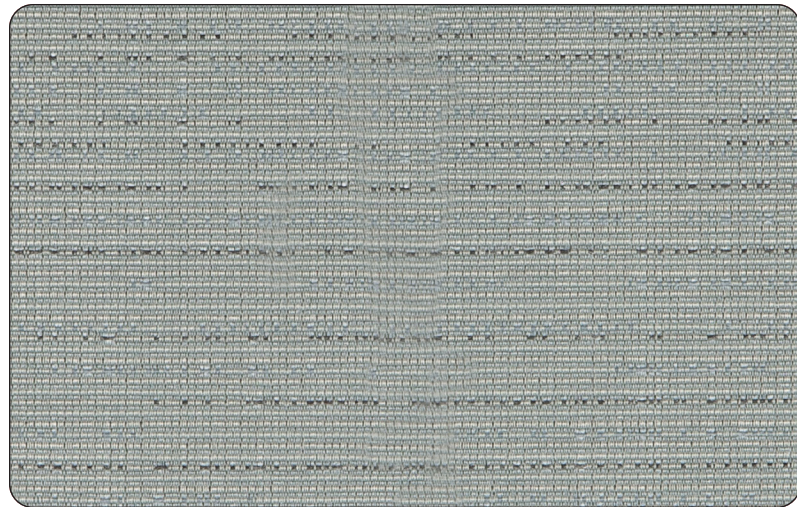
Axis / Cusp / Hinge / Tier

# Burch

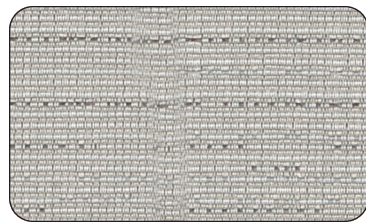
Toll Free **1.800.841.8111**

Visit us at [BurchFabrics.com](http://BurchFabrics.com)

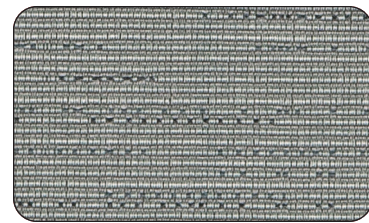
## Axis



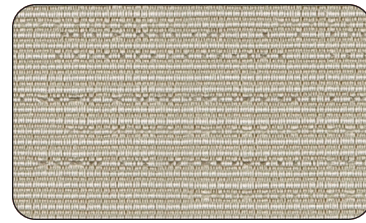
1009361 Chambray



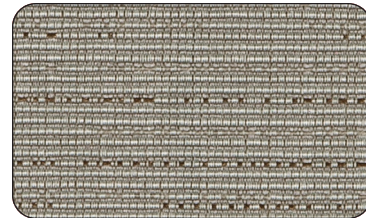
1009360 Silver



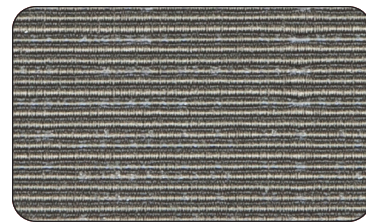
1009362 Bluestone



1009359 Dune

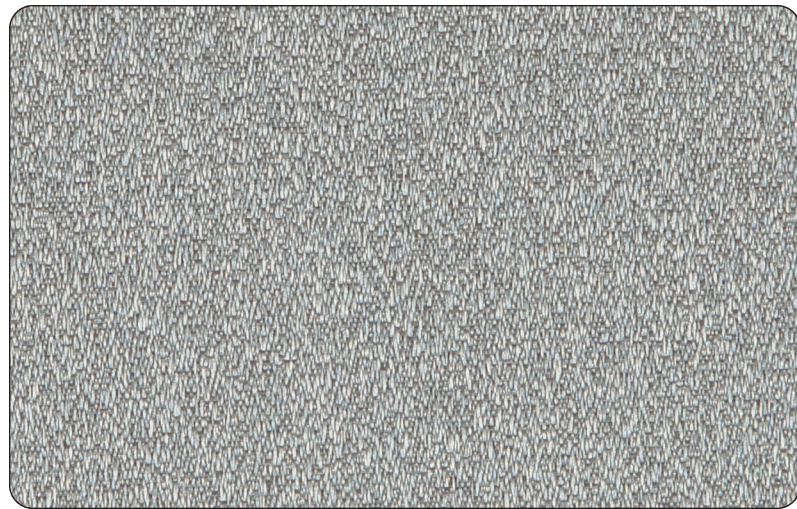


1009363 Fossil



1009364 Sepia

## Cusp



1009367 Oasis



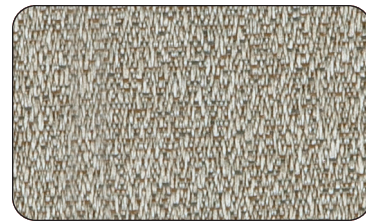
1009368 Concrete



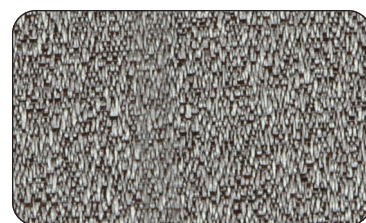
1009369 Quarry



1009365 Putty

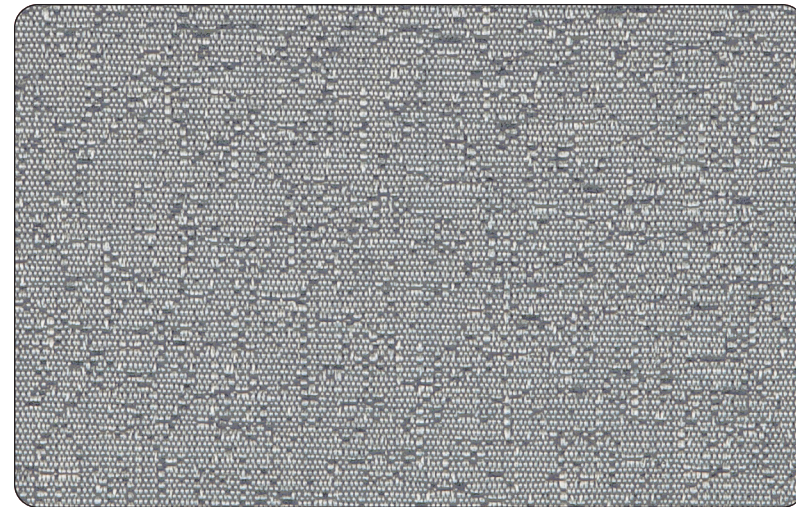


1009366 Fawn

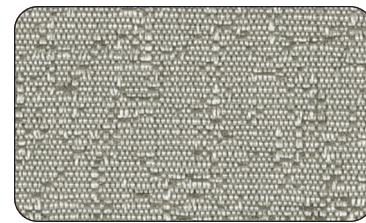


1009370 Mercury

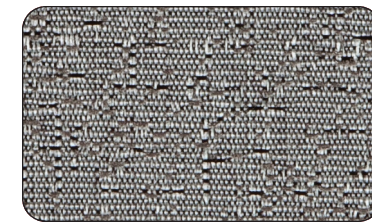
## Hinge



1009376 Azure



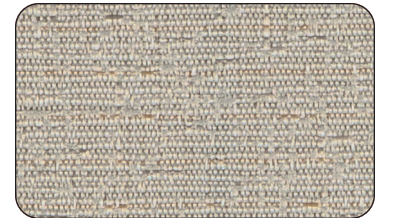
1009373 Earl Grey



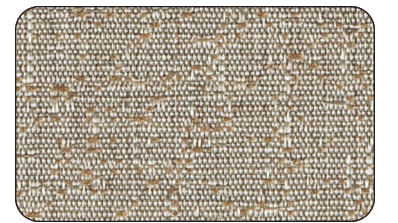
1009375 Shale



1009371 Pearl

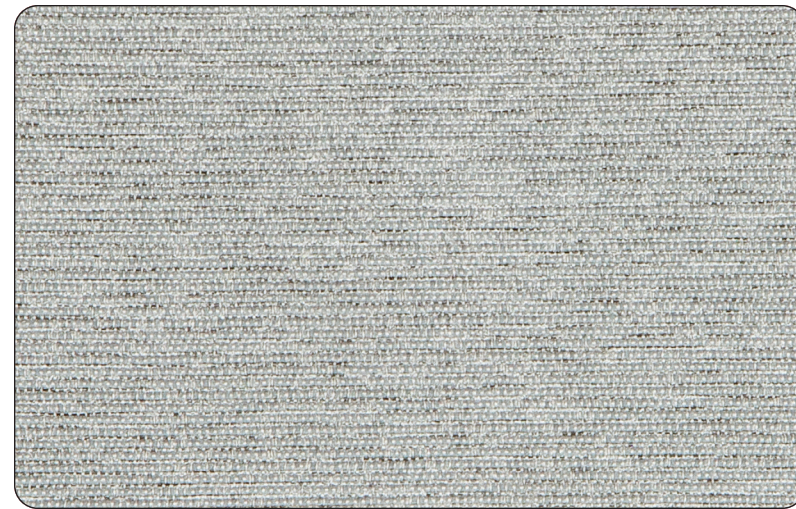


1009372 Ecru



1009374 Mink

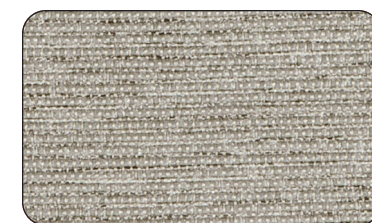
## Tier



1009378 Rain



1009377 Sterling



1009379 Stone



1009382 Champagne



1009381 Chino



1009380 Ecru