

Banter



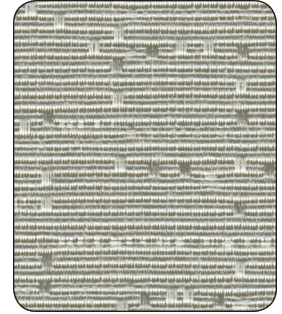
1010610 Pearl



1010612 Honeycomb



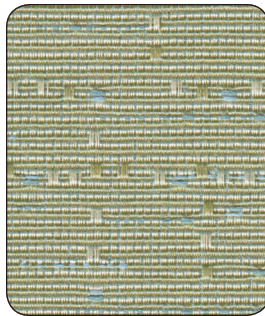
1010615 Crystal



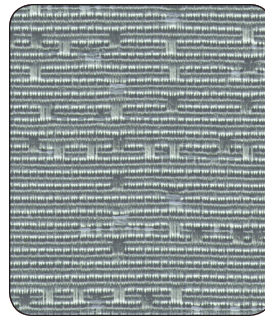
1010616 Sterling



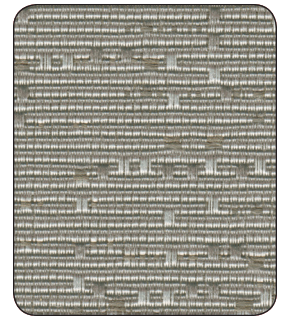
1010611 Sahara



1010613 Seaglass

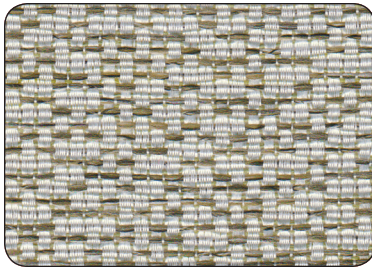


1010614 Topaz



1010617 Greystone

Jargon



1010618 Café Au Lait



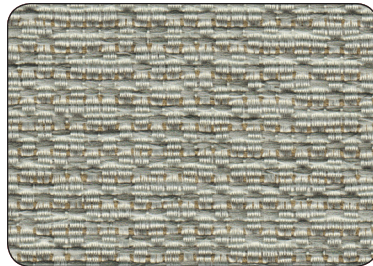
1010623 Grassland



1010619 Coppertone



1010621 Opal





1010622 Earl Grey




1010620 Mudslide

In Demand Plus III Collection / Vertical Surface Fabrics

- High Inventory
- Made in the U.S.A.
- Recycled Content

	Banter	Jargon
Content	36% Post Consumer Recycled Polyester 35% Post Industrial Recycled Polyester 29% Polyester 	51% Post Industrial Recycled Polyester 27% Post Consumer Recycled Polyester 22% Polyester 
Ends / Picks	145 / 29	145 / 29
Weight	11.5 oz. / lin yd.	10.9 oz. / lin yd.
Repeat	H 17.125" V 35.172" / Directional	H 8.375" V 44.138" / Directional
Roll Size / Width	60 yds. / 66"	60 yds. / 66"
Cleaning Code	W-S	W-S
Flammability ³	ASTM E-84 / Cal. TB 117-2013 NFPA 260 / UFAC	ASTM E-84 / Cal. TB 117-2013 NFPA 260 / UFAC

Additional Info Banter and Jargon **meets or exceeds** ACT® Performance Guidelines.



*ACT® Registered Certification Marks

Dye lots may vary from samples shown. Final determination of the suitability of this product for an application rests with the user.

Flammability: This term and any corresponding data refer to the typical performance in the specific tests indicated and should not be construed to imply the behavior of this or any other material under actual fire conditions.

A Proposition 65 Warning may be applicable for this product. Please refer to burchfabrics.com for more information.

Directional Fabric

Banter and Jargon directional fabrics. Please use caution when cutting and applying.

UL Recognized Component

Banter and Jargon can be applied without need for further testing to any office panel system which has been authorized for use with fabrics included in UL's Fabric Recognition Program.

Earth Friendly

Banter and Jargon are part of the Earth Friendly Collection. Burch's Earth Friendly Collection provides fabric options for reducing a negative impact on the environment.

Please visit our website at BurchFabrics.com for complete specification information as well as cleaning guidelines.

Burch

Toll Free **1.800.841.8111**

Visit us at BurchFabrics.com